

Pitch 50.8 mm (2.00 in.)



**uni CPB – a strong and wear resistant belt**

The uni CPB 2 in. pitch, straight running belt was created for heavy duty conveyors. It replaces steel slat top chains and other technologies being used for high wear or heavy duty applications.

**The uni CPB (Closed and Rough Top) belts have increased performance in the following industries/applications:**

- Automotive applications including manrider belts, car conveyors, leak tests
- Carwash applications including carwash, interior detailing areas
- Material handling applications including pallet handling and other heavy duty product applications
- Meat (beef & pork) applications including hook lines and hide takeaway conveyors
- Bakery applications including stacked pan handling and packaging lines
- People moving applications including ski lifts and amusement parks

**Product features and operational benefits:**

- No lubrication required
- Easy maintenance and less downtime – unique locking system (lockpin)
- Reduced noise level
- Extremely wear and impact resistant
- Unique sprocket engagement allows long conveyors with reduced pulsation
- Rough top surface reduces slippage and allows safe movements

## Standard Products



uni CPB C

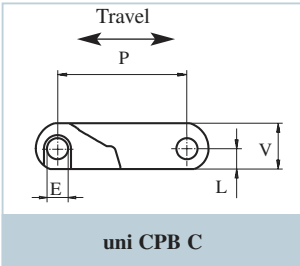


uni CPB 20% Rough

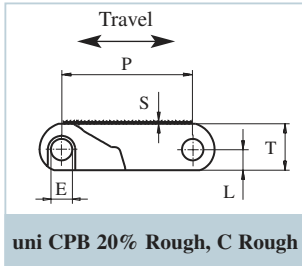


uni CPB C Rough

## Dimensional Sketches



uni CPB C



uni CPB 20% Rough, C Rough

## Dimensions

	mm	in.
E	8.3	0.33
L	8.0	0.31
P	50.8	2.00
S	1.0	0.04
T	18.0	0.71
V	19.0	0.75



Straight running



50.8 mm (2.00 in.)



See page 7 and 8



85 mm (3.3 in.)



See page 84 and 85

## Accessories



See page 88

## Standard Materials and Colors

Type	Standard materials and colors	Pins	
		Material and color	
uni CPB C	POM-NLAS <b>K</b>		PA6.6 <b>N</b>
	POM-NL <b>K</b>		PA6.6 <b>N</b>
	PP <b>G</b>		PA6.6 <b>N</b>
uni CPB 20% Rough	POM-NLAS <b>K</b>		PA6.6 <b>N</b>
	POM-NL <b>K</b>		PA6.6 <b>N</b>
uni CPB C Rough	POM-NL <b>K</b>		PA6.6 <b>N</b>

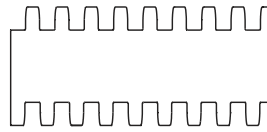
## Standard Bricklaid Belt Widths (See next page for Single Link® widths)

mm	in.	mm	in.	mm	in.	mm	in.
150	5.9	651	25.6	1151	45.3	1652	65.0
200	7.9	701	27.6	1201	47.3	1702	67.0
250	9.8	751	29.6	1252	49.3	1752	69.0
300	11.8	801	31.5	1302	51.3	1802	70.9
350	13.8	851	33.5	1352	53.2	1852	72.9
401	15.8	901	35.5	1402	55.2	1902	74.9
451	17.8	951	37.4	1452	57.2	1952	76.9
501	19.7	1001	39.4	1502	59.1	2002	78.8
551	21.7	1051	41.4	1552	61.1	2052	80.8
601	23.7	1101	43.3	1602	63.1	2102	82.8

uni CPB Single Link®



uni CPB is also available as Single Link® in the following standard width:



K600 (150.5 mm (5.93 in.))

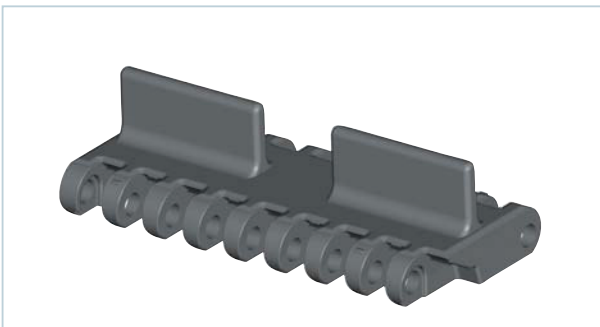
Permissible Tensile Strength

Belt material	POM		PP	
Pin material	PA6.6		PA6.6	
	N/m	lb/ft	N/m	lb/ft
uni CPB C, 20%/C Rough	52000	3563	35000	2398

Belt Weights

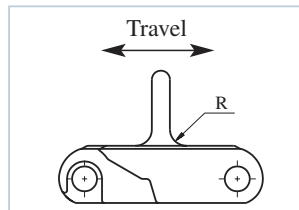
Belt material	POM		PP	
Pin material	PA6.6		PA6.6	
	kg/m <sup>2</sup>	lb/ft <sup>2</sup>	kg/m <sup>2</sup>	lb/ft <sup>2</sup>
uni CPBC, 20%/C Rough	16.6	3.40	11.1	2.27

Standard Selection Accessories



uni CPB Product Support flat (no Ribs)

Dimensional Sketch



uni CPB Product Support flat (no Ribs)

Dimensions

	mm	in.
R	5.5	0.22

Distance between product support is 30.0 mm (1.18 in.).

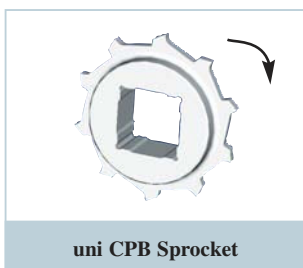
Standard Materials, Colors and Dimensions

Height		Type	Width		Standard material & color
mm	in.		mm	in.	POM-NLAS
25.4	1.00	K600	150.5	5.93	<b>K</b>

## Standard Sprockets

No. of teeth	Pitch diameter		Overall diameter		Hub diameter		Bore		Reference no. plastic
	mm	in.	mm	in.	mm	in.	mm	in.	
6	101.6	4.00	99.5	3.92	65.0	2.56	ø18.0/40.0*	ø0.71/1.57*	1833MPB06N
							sq 38.1	sq 1.50	1833MPB06N15INSQ
							sq 40.0	sq 1.57	1833MPB06N40MMSQ
8	132.8	5.23	132.9	5.23	65.0	2.56	ø18.0/40.0*	ø0.71/1.57*	1833MPB08N
							sq 38.1	sq 1.50	1833MPB08N15INSQ
							sq 40.0	sq 1.57	1833MPB08N40MMSQ
							sq 50.8	sq 2.00	1833MPB08N20INSQ
10	164.4	6.47	165.8	6.53	65.0	2.56	ø18.0/40.0*	ø0.71/1.57*	1833MPB10N
							sq 38.1	sq 1.50	1833MPB10N15INSQ
							sq 40.0	sq 1.57	1833MPB10N40MMSQ
					120.0	4.72	ø40.0/ø70.0*	ø1.57/2.76*	1833MPB10NBB
							sq 50.8	sq 2.00	1833MPB10NBB20INSQ
							sq 63.5	sq 2.50	1833MPB10NBB25INSQ
12	196.3	7.73	198.6	7.82	65.0	2.56	ø18.0/40.0*	ø0.71/1.57*	1833MPB12N
							sq 38.1	sq 1.50	1833MPB12N15INSQ
							sq 40.0	sq 1.57	1833MPB12N40MMSQ
					120.0	4.72	ø40.0/ø70.0*	1.57/2.76*	1833MPB12NBB
							sq 50.8	sq 2.00	1833MPB12NBB20INSQ
							sq 40.0	sq 1.57	1833MPB12NBB40MMSQ
16	260.4	10.25	255.0	10.04	72.0	2.83	ø18.0/40.0*	ø0.71/1.57*	1833MPB16N
					150.0	5.91	ø40.0/ø70.0*	1.57/2.76*	1833MPB16NBB

\* Minimum/maximum round bore.



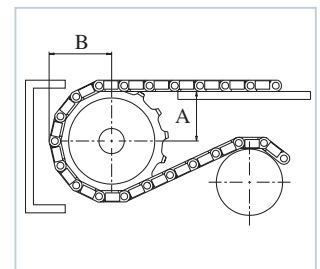
uni CPB Sprocket

Width of sprockets: 42.3 mm (1.67 in.)

Tooth width: 9.5 mm (0.37 in.)

## Placement of Wearstrips and Sprockets

No. of teeth	Minimum B-dimension		Wearstrip distance A	
	mm	in.	mm	in.
6	60.9	2.40	36.2	1.43
8	76.8	3.02	53.6	2.11
10	92.8	3.65	70.5	2.78
12	108.8	4.28	87.2	3.43
16	141.1	5.56	120.2	4.73



## Standard Material and Color

PA6 N

## Max. Load per Sprocket

Belt material	POM	
	N	lb
uni CPB	2500	560

Other sprocket sizes are available upon request. Two-part sprockets available upon request.

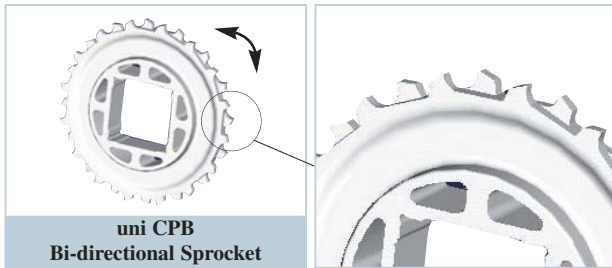
Please contact uni-chains® for further information.

*Please note, if travel is in both directions, an extra set of sprockets is required or use Bi-directional options. (See next page.)*

### Standard Bi-directional Sprockets

No. of teeth	pitch diameter		Overall diameter		Hub diameter		Bore		Reference no. plastic
	mm	in.	mm	in.	mm	in.	mm	in.	
10	164.4	6.47	165.8	6.53	65.0	2.56	ø18.0/40.0*	ø0.71/1.57*	1833MPB10NR2
							sq 38.1	sq 1.50	1833MPB10NR215INSQ
							sq 40.0	sq 1.57	1833MPB10NR240MMSQ
					120.0	4.72	ø40.0/ø70*	ø1.57/2.76*	1833MPB10NBBR2
							sq 60.0	sq 2.36	1833MPB10NBBR260MMSQ
							sq 63.5	sq 2.50	1833MPB10NBBR225INSQ
12	196.3	7.73	198.6	7.82	120.0	4.72	sq 60.0	sq 2.36	1833MPB12NBBR260MMSQ
16	260.4	10.25	255.0	10.04	120.0	4.72	sq 60.0	sq 2.36	1833MPB16NBBR260MMSQ
							sq 90.0	sq 3.54	1833MPB16NBBR290MMSQ

\* Minimum/maximum round bore.



**Width of sprockets:**

10 - 12 teeth: 42.3 mm (1.67 in.)

16 teeth: 40.8 mm (1.61 in.)

### Standard Material and Color

PA6 N

Other sprocket sizes are available upon request.

Please contact uni-chains® for further information.